



SHOPFITTING PROJECTS



This detailed floor plan shows the layout of the restaurant, including the kitchen, dining area, and entrance. The kitchen is located at the top left and contains a sink, stove, and various storage units. The dining area is the central part of the restaurant, featuring several tables and chairs. The entrance is at the bottom right, with a reception desk and a waiting area. The plan includes dimensions for all areas and furniture placement.

Dimensions:

- Overall width: 3175
- Overall depth: 3100
- Kitchen width: 2030
- Kitchen depth: 830
- Dining area width: 3150
- Dining area depth: 800
- Entrance width: 3100
- Entrance depth: 830

Furniture and Equipment:

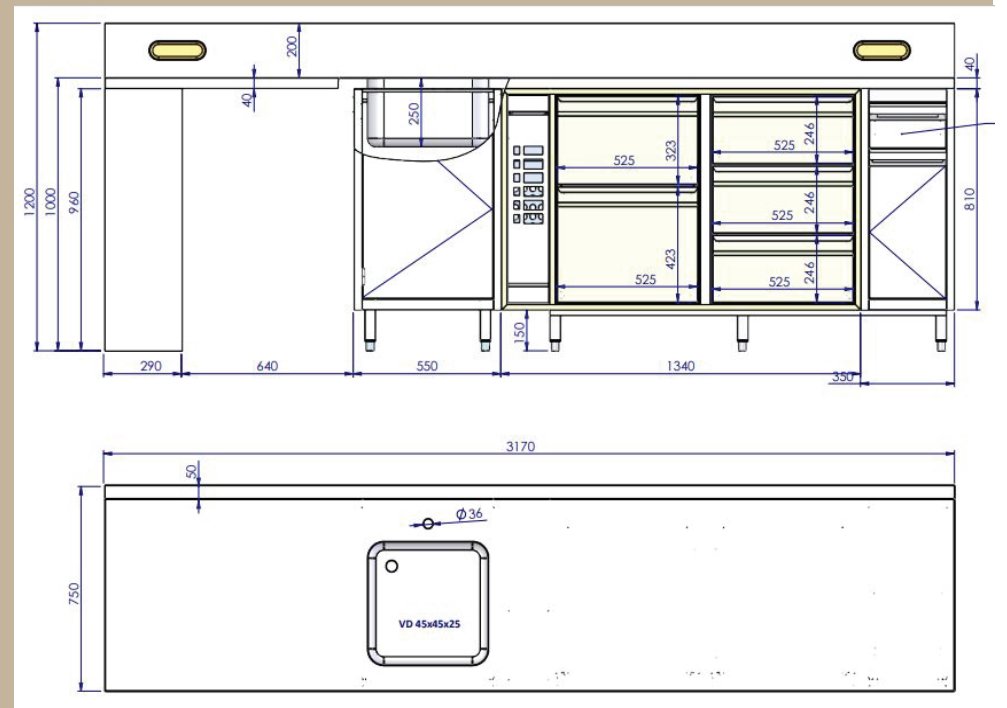
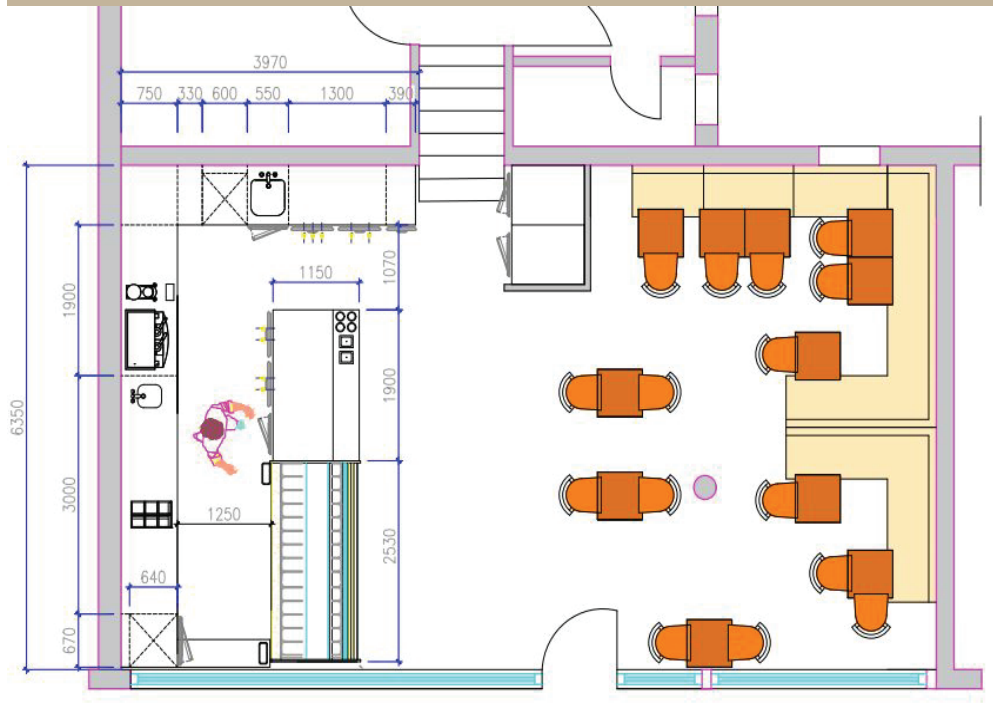
- Kitchen: Sink, stove, storage units, and a counter.
- Dining area: Several tables and chairs, including a large table with a menu board.
- Entrance: Reception desk, waiting area, and a set of stairs.



Medium-sized project Gharanfil



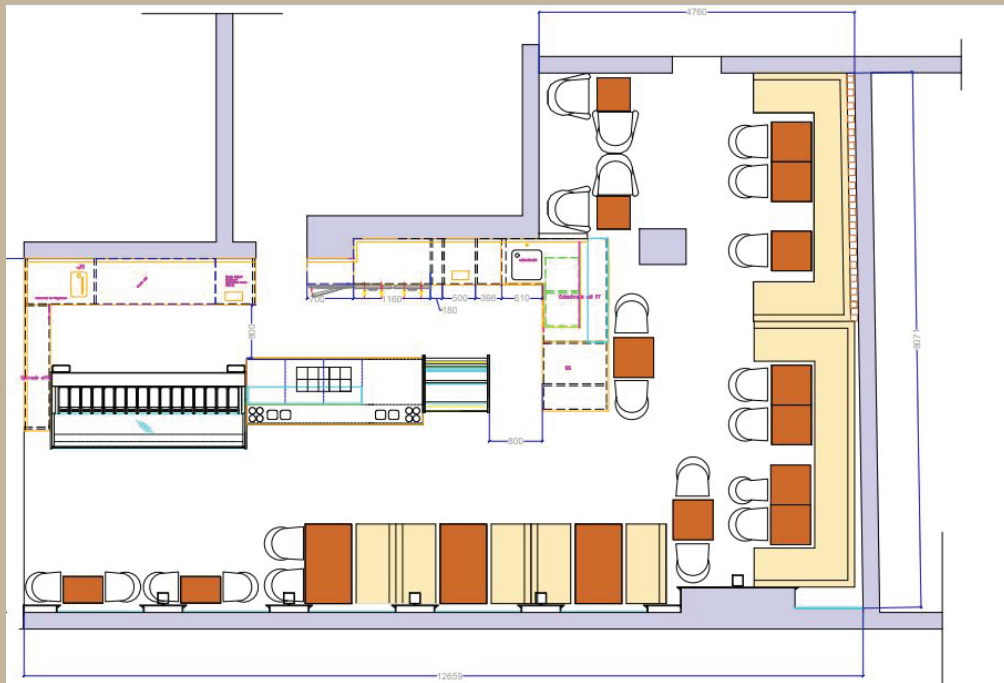
Medium-sized project Ankay



Medium-sized project Ankay



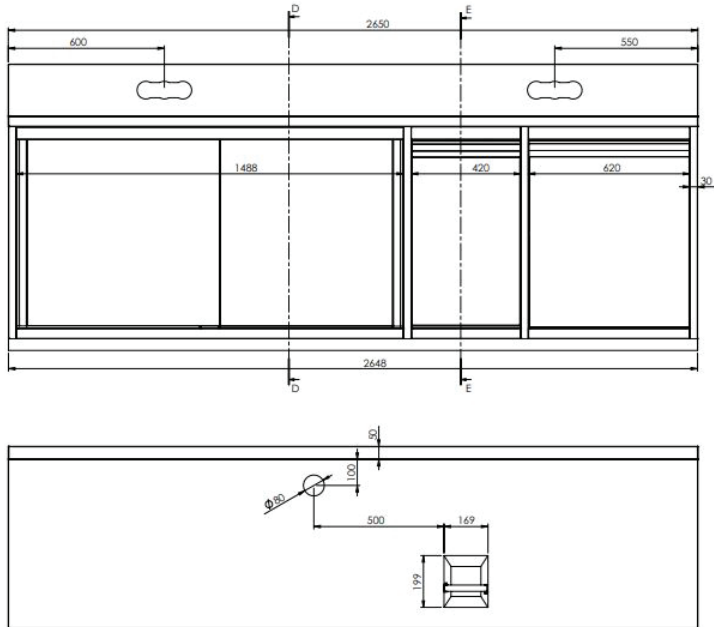
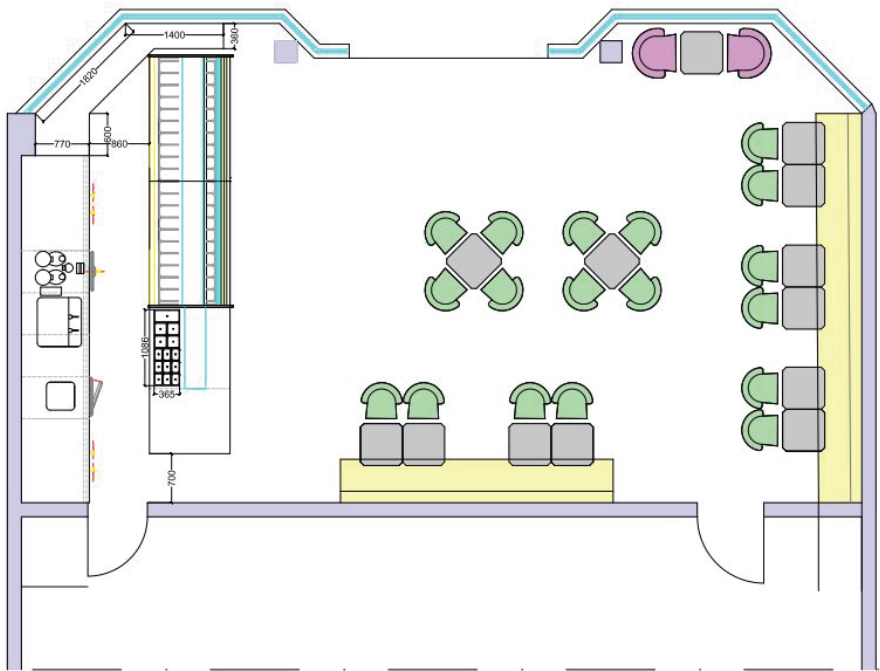
Medium-sized project Cortina



Medium-sized project Cortina



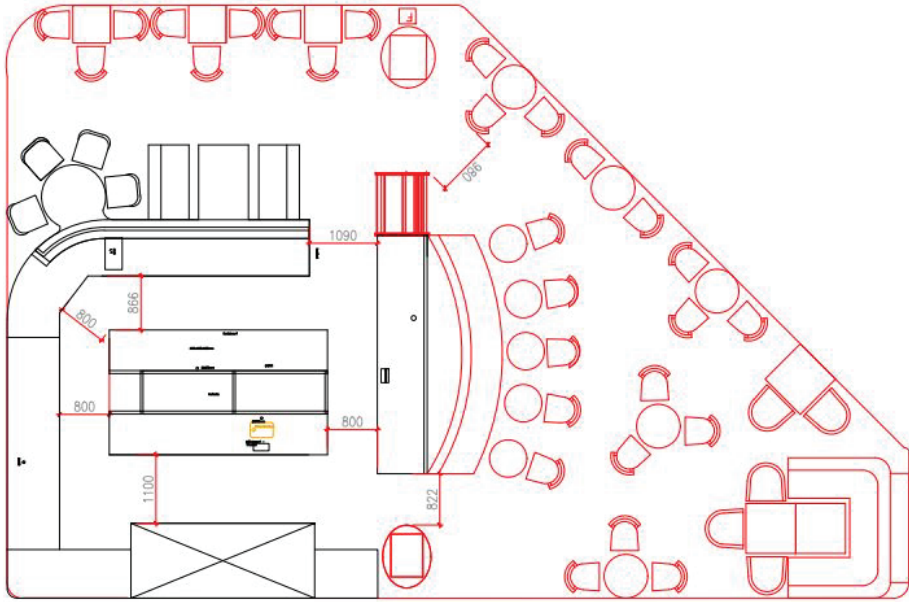
Large-sized project Corso



Large-sized project Corso



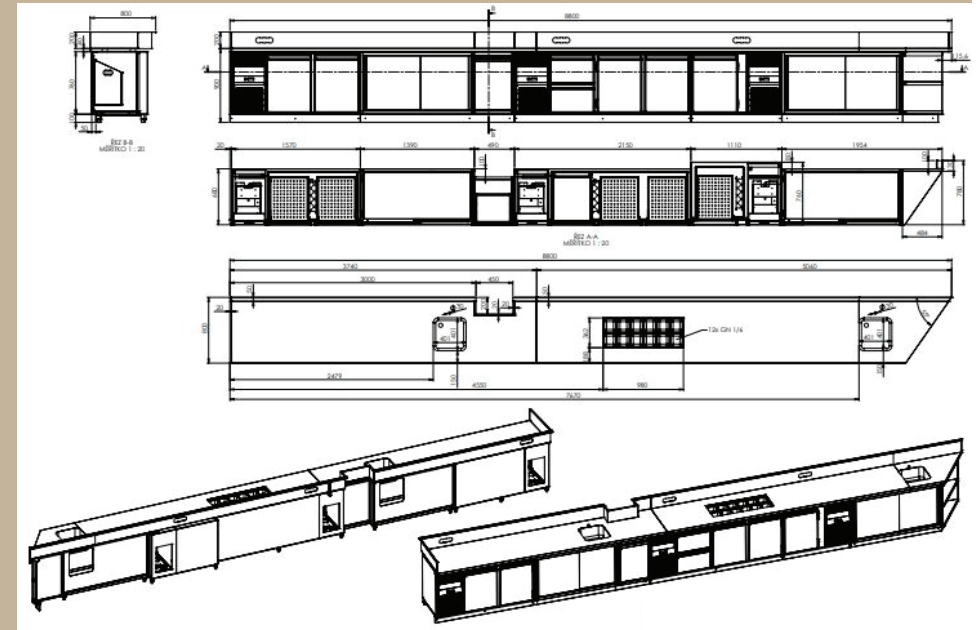
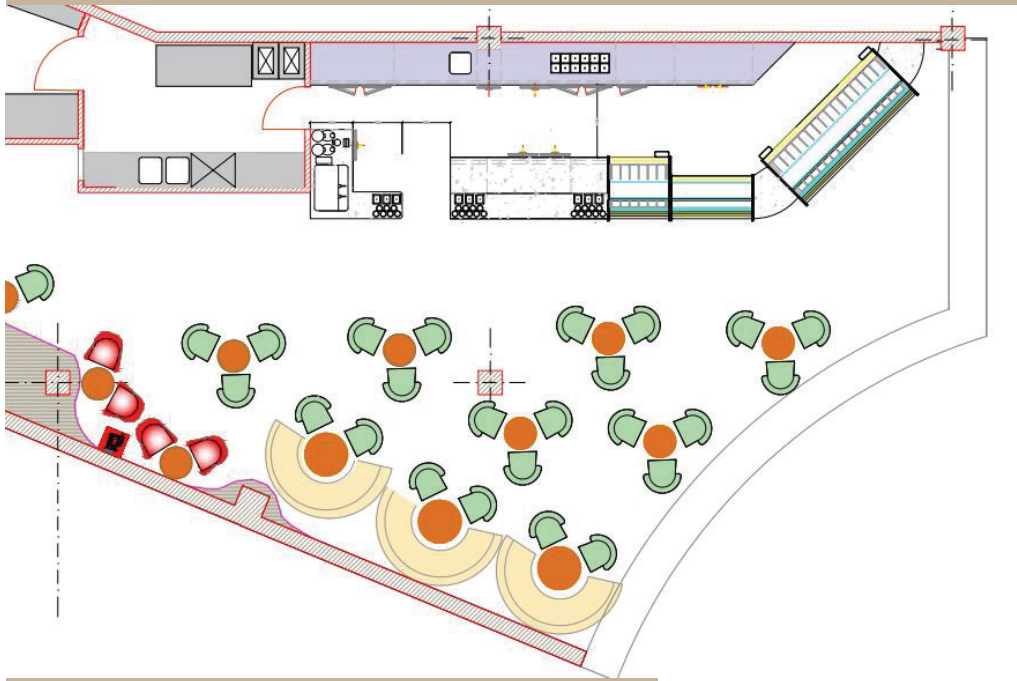
Large-sized project Bella Italia



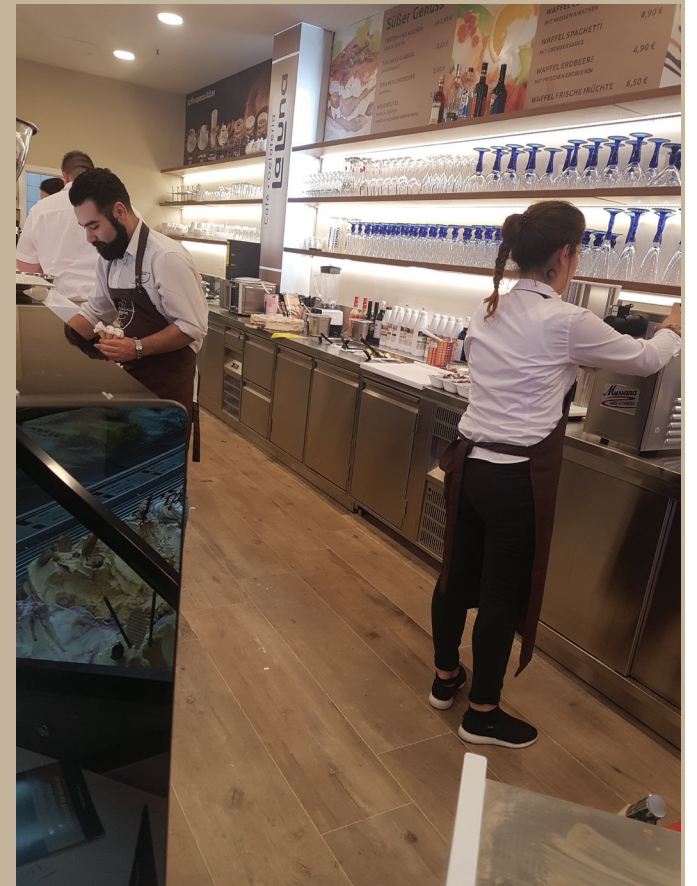
Large-sized project Bella Italia



Large-sized project La Luna Lingen



Large-sized project La Luna Lingen



Shopfitting projects



Shopfitting projects



Shopfitting projects



Shopfitting projects



Shopfitting projects



Shopfitting projects



Shopfitting projects



Shopfitting projects



Shopfitting projects



Shopfitting projects



Shopfitting projects



Shopfitting projects



LA SQUADRA
e i s v i t r i n e n



LEDRA s.r.o.

Hlavná 1246
951 35 Veľké Zálužie
Slovakia

Tel: +49 174 454 63 08
+421 915 752 882
+421 905 403 478

E-mail: sales@lasquadra.de

Web: lasquadra.de